



**HATENBOERWATER**

*Fresh in water since 1906.*

## Oceanus RO type fresh water generators Seawater desalination systems

Hatenboer-Water designs and develops durable reverse osmosis units for any type of vessel or offshore structure. Easy to install, operate and maintain, these solutions can be delivered in a customized or standard set-up.

### Standard

The standard series offer a plug & play, economical and quickly supplied alternative to traditional solutions.

### Application

The Oceanus series covers a range of 12-30 m<sup>3</sup>/day fresh water production on any sea.

Oceanus offers the perfect water treatment solution for ships and offshore installations such as jack-up rigs, offshore platforms, cruise ships, accommodations, fishing trawlers, ferries, AHTS as well as many others.



DOS 40-3/4/5/6

### Key specifications

Seawater TDS design	35000 ppm
Design seawater temperature	15°C
Produced water quality	< 500 ppm @ 25°C

Features	DOS 40-3	DOS 40-4	DOS 40-5	DOS 40-6	DOS 40-8
Capacity	12 m <sup>3</sup> per day	16 m <sup>3</sup> per day	20 m <sup>3</sup> per day	24 m <sup>3</sup> per day	30 m <sup>3</sup> per day
Installed power HP pump	5.5 kW	5.5 kW	5.5 kW	5.5 kW	7.5 kW
Seawater feed flow	2,4 m <sup>3</sup> /h	2,4 m <sup>3</sup> /h	2,4 m <sup>3</sup> /h	2,4 m <sup>3</sup> /h	3 m <sup>3</sup> /h
Dimensions (LxWxH)	1000x800x1900mm	1000x800x1900mm	1000x800x1900mm	1000x800x1900mm	1500x900x2000mm
Weight (dry / operating)	336 kg / 508 kg	349 kg / 532 kg	362 kg / 556 kg	375 kg / 580 kg	450 kg / 860 kg

**HATENBOER-WATER BV**  
P.O. Box 6013, NL-3002 AA Rotterdam  
E [info@hatenboer-water.com](mailto:info@hatenboer-water.com)  
T +31 (0)10 409 12 00  
I [www.hatenboer-water.com](http://www.hatenboer-water.com)

**HATENBOER-WATER ASIA Pte Ltd**  
22 Boon Lay Way, #01-57 Tradehub 21  
Singapore 609968  
E [info.asia@hatenboer-water.com](mailto:info.asia@hatenboer-water.com)  
T (+65) 65158021



# Oceanus RO type fresh water generator

## Seawater desalination systems

### Standard features

The Oceanus RO series is equipped with:

- Control panel with a Hatenboer-Water microcontroller and touch screen
- Membrane configuration can accommodate varying levels of seawater salinities and temperatures
- 3 years free of charge 'log sheet data support'
- Continuous monitoring of permeate quality and automatic dump.
- Automatically operated multimedia filtration for increased performance
- Automatic fresh flush system to prevent fouling in standby modus
- Chemical cleaning unit for cleaning fouled membranes

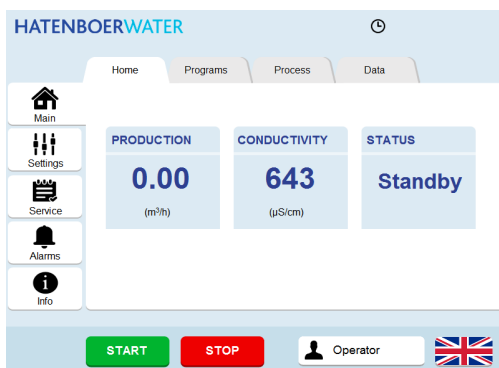
### Heavy duty design

- Ridged steel base frames for safe transport and easy installation
- Duplex stainless steel high pressure manifolds for long life time
- High quality and high pressure pump for long life time and minimal down time.

### Controller

Our water makers are equipped with our own X7 user friendly interfaces, for more comprehensive and easier system control.

- Operator interface (7")
- (Preventive) alarm and service notifications increase productivity and reduce maintenance time of the equipment
- Embedded RJ45 Ethernet port and standard MODBUS TCP/IP functionality
- Operational log data, settings and alarms can quickly be retrieved.



Controller user interface

### Optional features

The following components are available for the Oceanus series:

- Prefiltration by cyclone separator, for operation in shallow waters
- Seawater feed pre-heater (for sea water < 5°C)
- Hadex® disinfectant dosing unit for chlorination of RO permeate
- Neutralising filter for post-treatment of RO permeate.

### Standards and guidelines

#### Electrical

- IEC 61892-1 – 61892-7
- IEC 60092-350
- IEC 60092-351
- IEC 60092-353
- IEC 60228, class 2 & 5

#### Directives and guidelines

#### Directives and guidelines

- MLC, 2006
- WHO
- EC directives
- Machinery safety (2006/42/EC)
- EMC directive (2014/30/EC)
- Low voltage directive (2014/35/EU)
- MODU CODE



DOS 40-8