



**HATENBOERWATER**

*Fresh in water since 1906.*

## HW Demitec water filter elements Serie HWMB

HWMB is the latest development in nominal rated spun bonded filter cartridge design. Manufactured with a true graded density, these elements exhibit a high void volume that results in low clean differential pressure losses and an excellent dirt holding capacity when compared to similarly rated elements. Each cartridge is complete with an integral support for maximum strength. The superior structure remains integral even under severe operating conditions and is less prone to media migration and breakthrough often found on other unsupported spun bonded products.

### Construction

**Support core:** One piece high strength all polypropylene

**Outer core:** HWMB polypropylene fibers are blown continuously onto the support core, without the need for binders, resins or lubricants. This results in a one piece construction that is resistant to unloading and media shedding. Thermally bonded fiber matrix minimizes fiber migration.

**End cap:** welded direct to the core for extra security and strength.

Materials meet US FDA Title 21 and USP Class VI requirements.

### Availability

The most common from stock

	PP core
Recommended ΔP at 20 °C	1.5 Bar
Maximum ΔP at 20 °C	4.0
at 50 °C	1.5
at 80 °C	0.25

### Grade of filtration

1, 5, 10, 20, 30, 50, 75, 100, 150 micron

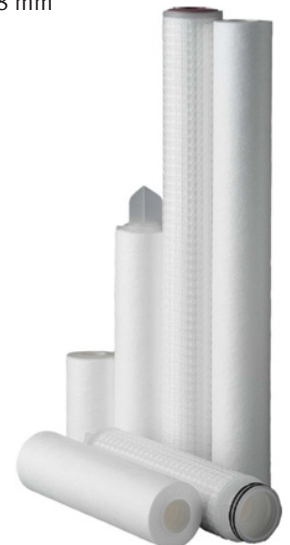
### Length of filter

10, 20, 30 and 40". And 10 and 20" Big blue

### Width of filter

**Outside diameter:** 64 mm  
116 mm (Big Blue)

**Core diameter:** 28 mm



Flow Rates For Water (10" element)

